



HeartShare
HUMAN SERVICES OF NEW YORK



Table Of Contents

HeartShare Developmental Disabilities Services	6
Residential Services	8
Community Habilitation Services	10
Day Services	12
Medicaid Service Coordination	14
Pre-Vocational & Employment Services	16
Respite/Recreation Programs	18
Options Program	20
Pre-School Services	22
The HeartShare School	24
HeartShare Wellness, Ltd.	28
Article 16 Clinic	30
Health Home Program	32
Energy Assistance and Community Development	34
HeartShare St. Vincent's Services	36
Foster Care & Adoption	38
Preventive Services	40
American Dream Program	42
Supported Housing	44
After-School & Community Services	46
Chemical Dependency Clinic	48
Our Memberships and Affiliations	50
Our Programs	51
Our Donors	55
Our Financial Statement	61



Our Mission

HearthShare and its Family of Services nurtures and supports, with dignity and respect, children, adults and families in order to expand opportunities and enhance lives.



ny.give.org

**Your support
empowers
individuals
to overcome
challenges and
reach their full
potential.**

Thank You!

Paul Torre
Chairman of the Board

Bill Guarinello
President & CEO





About HeartShare and its Developmental Disabilities Services

HeartShare Developmental Disabilities Services assist children and adults diagnosed with intellectual and developmental disabilities, including autism spectrum disorders, cerebral palsy and Down Syndrome. From education and life skills to respite and health services, HeartShare offers greater access to a more independent life. Since its founding in 1914, HeartShare has expanded to over 100 program sites across Brooklyn, Queens and Staten Island. HeartShare is proud that 90% of all revenue goes directly to its programs and services. HeartShare is accredited by the Council on Accreditation (COA) and is a Better Business Bureau Accredited Charity.

BOARD AND LEADERSHIP

Paul J. Torre
Chairman

Robert Charles Golden
First Vice Chair

John T. Sharkey
Second Vice Chair

Michael J. Abatemarco, CPA
Treasurer

Salvatore B. Calabrese
Secretary

Members

Arleen Baez
Joseph R. Benfante, Esq.
Joseph A. Caruana, DO
Nancy C. Cianflone
Angelo J. Del Giudice
Craig A. Eaton, Esq.
The Reverend Patrick S. Flanagan, CM
Jonathan C. Goldstein, Esq.
Mark C. Healy
Johnny Johnston
Christopher G. Jones, MSW
Jim Kerr
Frank J. Maresca
Raymond J. Mollica, DPM
Terence K. Mullin
Kenneth P. Nolan, Esq.
The Reverend Thomas G. Pettei
Andrew T. Piekarski
Peter E. Pisapia, Esq.
Dennis W. Quirk
Rosanna Scotto
Christine E. Strehle

ADMINISTRATION

President and CEO
William R. Guarinello, MS

Chief Financial Officer
Anthony F. Bianca

Controller
Lynette Fernandez

Executive Vice President
George A. Cincotta, Jr.

Vice Presidents

Meredith A. Beck
Stanley T. Capela
Michael A. Cutrona
Theresa Malot
Vincent L. Pagnotta
Jennifer Reses, MPA

Directors

Alex Bethea
Amanda Holder
Peter Lavin
Danielle Maurice
Rosie Millan
Teresa Wong
Rose-Ann Ambrose
William Sheridan

Special Assistant
Hayley Cowitt, Esq.

DEVELOPMENTAL DISABILITIES SERVICES

Executive Director
Linda Tempel, MS, MBA

Associate Executive Director
Evelyn Alvarez, MA

Executive Vice President
Joyce Levin, MS

Senior Vice President
Carol Verdi, LCSW

Vice Presidents
Deborah Bencivenga
Donna M. Carroll, MSA
Robert Jordan, MA

Senior Directors

Dominick Barone
Priscilla C. Bannerman
Barbara Falcone, MA
Suzanne Schein-McLemore, RN
Africa Staples, MPA
Tracey Stokes, MHA
Dawn White, MA

Directors

Eunice Beck, MSW
Enitza Carril, Ph.D.
Dianne Cattrano, MS, SAS

Amy Fried
Jennifer Giambra, MA
Melisa Giuffra, MSW
Joanne Green, MPH
Paige Ingalls, LCSW
William Jackson
Karen Johnson-Marshall, MBA
Martha Kuszec, MS, SAS/SDA
Sandra Lichtenstein, MA-CCC-SLP
Loucas Louca, MA
Maria Matrascia
Deborah Pafundi, MS, SAS/SDA
Joshua Skolnick
Kathy Toal, MS, SAS
Laurie Yankowitz, Ed.D.

ENERGY ASSISTANCE & COMMUNITY DEVELOPMENT

Vice President
Joseph B. Guarinello

Director
Tanya Jones

COUNSEL
Wingate, Kearney & Cullen
45 Main Street, Suite 1020
Brooklyn, NY 11201

INDEPENDENT AUDITORS
Loeb & Troper
655 Third Avenue
New York, NY 10017

EMPLOYMENT IDENTIFICATION NUMBER
#11 - 1633549

www.heartshare.org



Residential Services

Danielle, Rosemary and Jack grew up together on Staten Island. They were three classmates who became fast friends, and so did their families. “As older parents, we were thinking long and hard about the future. The HeartShare team helped us keep our kids together and gave us that peace of mind,” said Rosemary’s mom, Ciretta. Today, the trio lives at HeartShare’s Scibelli Residence in Dongan Hills. Danielle, Rosemary and Jack each have their own lives, interests and schedules, but at the end of the day, they’re back at Scibelli sharing how their day went and enjoying their backyard. The HeartShare residence is not just a program. It’s a lifelong family.



Community Habilitation Services

Joe, who lives at HeartShare's Attardi Residence in Dyker Heights, Brooklyn, has become an avid bike rider with the help of Direct Support Professional Shawn Benedetto. "I used to be his grandmother's tenant. Joe is like family to me," said Shawn with a smile. Through HeartShare's Community Habilitation Program, Joe learns skills alongside someone with whom he's already comfortable. They've been working on Joe's cycling skills, including biking safely on busy city streets. From the Brooklyn Bridge to the Long Beach boardwalk, Joe and Shawn ride everywhere. Joe plans to race to the finish line at the NYC Five Boro Bike Tour.



Day Services

David is non-verbal, but he's never let that get in the way of communicating with others. "David uses his communication device to indicate what he needs and wants," said Vivian Romero-Gambrell, Assistant Program Coordinator at HeartShare's Hoffman Day Habilitation Program. Whether he's running errands or visiting the Bronx Zoo, David likes to be social by vocalizing. David especially likes to show off his baseball cap, watch and shoes. "Even though he's non-verbal doesn't mean that he can't communicate. He's intelligent, alert - and definitely a fashionista!" said Manager Jackie Bristol, who has known David since he moved into Sharkey I Residence in 1995.



Medicaid Service Coordination

Anthony had the opportunity to see his favorite R&B artist *The Weeknd* at the Barclay's Center. This wouldn't have happened unless HeartShare staff stopped to ask, *What does Anthony enjoy, and how can we help him achieve that?* Since Anthony is non-verbal, this question was difficult to answer. It didn't stop the HeartShare residential, day habilitation and MSC teams from finding out. Over the course of several months, they downloaded songs and created playlists for Anthony. "Through careful observation of his body movement and facial expressions, we identified Anthony's favorite genre of music," said Nena Bowen, a Direct Support Professional at HeartShare's Carroll Street Residence. As a result, Anthony experienced a sense of inclusion and expression of personal identity that we often take for granted.



Pre-Vocational & Employment Services

Justin has been working at HeartShare's Cuomo First Step Pre-School in Richmond Hill, Queens. "I have a lot of different goals," said Justin, who reports sharply at noon to deliver meals to HeartShare pre-schoolers. During his shift, Justin counts off the hot lunches, milk cartons, fruit and salads for each classroom. HeartShare's Pre-Vocational and Employment Programs help people like Justin explore their interests and find a position that's right for them. "I'm not going to be here forever," said Justin with a smile. "I'm going to work towards getting into retail and earning even more. This is just the beginning."



Respite/Recreation Programs

Nathan (center) has been participating in HeartShare's Respite/Recreation Programs for over a decade. When Nathan's not working at a local movie theater in Sheepshead Bay, he joins the HeartShare Respite Program for sporting events, Broadway plays and overnight trips to New Jersey and Pennsylvania. These activities are crucial to helping adults with I/DD develop a sense of independence. The overnight trips are often the first time program participants are away from their families. It's also relief for those caring for a loved one 24/7. "It gets harder and harder as we get older," said Nathan's mother, Faye. "Between HeartShare and his brother David, I know he's in good hands."



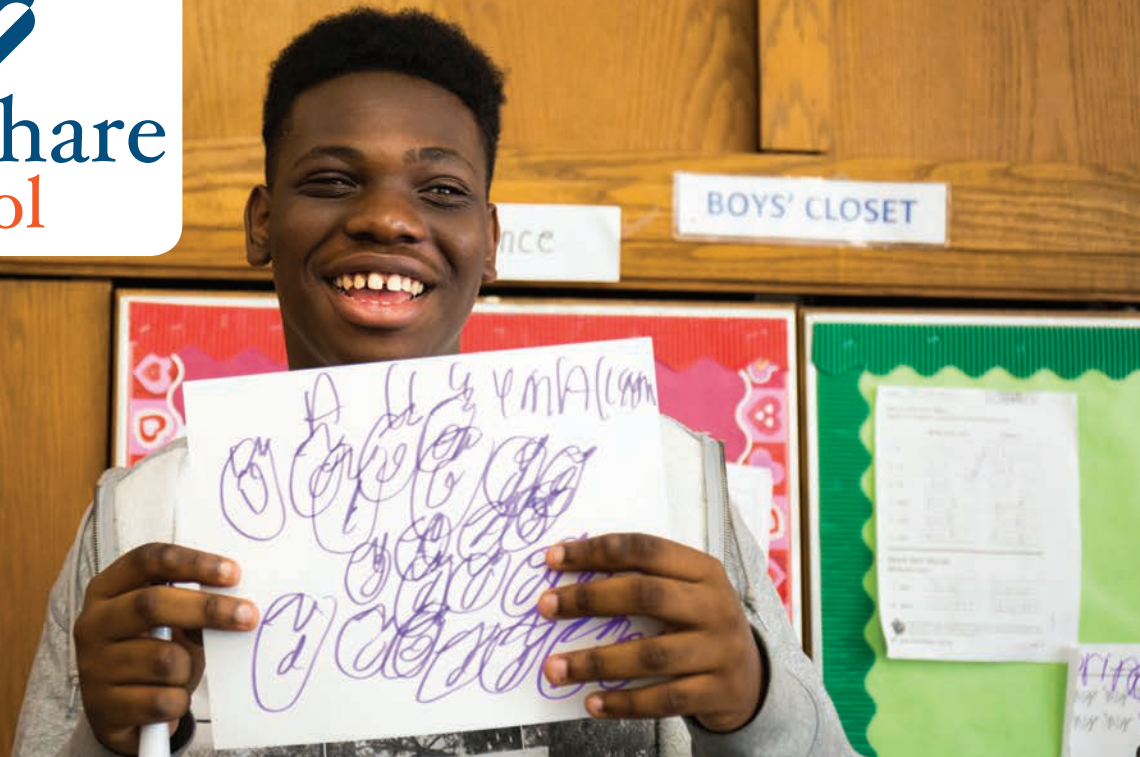
Options Programs

Heather whipped out her medals—an entire bag’s worth. Heather is an athlete thanks to her grandmother and adoptive parent, Marie. “I’ve had her since she was three years old,” Marie said. “I appreciate what HeartShare has done for me. With the Options grant, I can help Heather do what she loves,” said Marie, who uses the grant for Heather to attend a summer camp in upstate New York. As a doting grandmother and primary caretaker, Marie supports Heather in her athletic endeavors. From the Special Olympics to braving the Black Diamond ski trails at Lake Placid, Heather is fearless. Her next endeavor? “I want to learn how to snowboard,” Heather said with a smile.



Pre-School Services

Kaylee was unable to speak when she first started pre-school. With the help of Maria Fareri, a Speech Therapist at HeartShare Kiwanis First Step Program, Kaylee started using sign language. Next, Kaylee learned how to use a communication device. “It’s become her voice,” her mother Krystle explained. “Kaylee has learned to communicate her needs and wants with this device, which is customized to her interests and family life. Kaylee is more comfortable with her peers and I’m welcomed here anytime,” said her mom, who is a familiar face to the other kids on the playground.



About The HeartShare Education Center

The HeartShare Education Center, known as The HeartShare School, opened in 2007 for children ages 5-21, who have been diagnosed with Autism Spectrum Disorders (ASD). At The HeartShare School, the team works with each child and their family to ensure that each reaches the highest level of independence, which possibly means transitioning to a mainstream public school and, one day, living on their own, working a job and participating in family and community life. The school, which follows the Common Core Curriculum, utilizes Applied Behavioral Analysis (ABA), as well as offers occupational, physical and other therapies. The school hosts events encouraging academic inquiry, personal expression and career development.

BOARD OF DIRECTORS

Officers

Laurie Windsor
Chair

Nick Domingues
Vice Chair

Craig A. Ratigan
Treasurer

Barbara A. Slattery
Secretary

Members

Sheila Higginson
Don Huml
Vincent Iannelli
Sylvia LaCerra
Katherine Vero

ADMINISTRATION

Carol Verdi, LCSW
Executive Director

Sharon Toledo, M.Ed.
Director of Education

COUNSEL

Wingate, Kearney & Cullen
45 Main Street, Suite 1020
Brooklyn, NY 11201

INDEPENDENT AUDITORS

Loeb & Troper
655 Third Avenue
New York, NY 10017

EMPLOYMENT IDENTIFICATION NUMBER

#90 - 0452757

www.theheartshareschool.org





The HeartShare School

Chasitie attended The HeartShare School for children with autism. She also lived at the Children's Residence next door. During her time there, Chas developed her interests and sense of self. She's an avid music lover and dancer. Chas also expresses that energy through fitness, including Zumba. During summers, she enjoys trips to the beach and Hershey Park, PA. Now age 21, she is aging out of the program and is ready to transition to the next part of her young adult life. As Chas transitions out of HeartShare's care, her mother is confident about her more independent future. "Chas will be living in a supported apartment and can mostly take care of herself. I am so proud of her," her mom said.



About HeartShare Wellness, Ltd.

HeartShare Wellness, Ltd. offers health care and health coordination services to some of New York's most vulnerable patients. The Article 16 Clinic is a therapeutic clinic for children and adults with I/DD offering speech, occupational and physical therapies, individual and group counseling, as well as psychological and psychosocial evaluations. A selection of those clinical services are now conveniently available at day habilitation programs throughout HeartShare, Heaven's Home Community Services and the Guild for Exceptional Children. The Health Home Targeted Case Management Program is care coordination for children and adults with two or more chronic conditions. HeartShare Wellness patients, who already face compounded difficulties staying healthy, are met with sensitivity, compassion and specialized knowledge.

BOARD OF DIRECTORS

Joseph A. Caruana, DO
Chairman

Robert Calciano, MD
Vice Chairman

Michael J. Abatemarco, CPA
Treasurer

Carl Campagna
Member

Peter Ungaro
Member

ADMINISTRATION

Joyce Levin, MS
Executive Director

Jude Alexandre, MSW
Senior Director

Angela Thomas, MPA
Clinic Director, Article 16

Gregory Tsinker
Director, Health Home Program

Vincent Siasoco, MD, MBA
Medical Director

COUNSEL

Wingate, Kearney & Cullen
45 Main Street, Suite 1020
Brooklyn, NY 11201

INDEPENDENT AUDITORS

Loeb & Troper
655 Third Avenue
New York, NY 10017

EMPLOYMENT IDENTIFICATION NUMBER

#11 - 3538646

www.heartsharewellness.org



Article 16 Clinic

Leena works with Speech Therapist Jackie O'Loughlin for a thirty minute session each week at HeartShare's Union Turnpike Day Habilitation Program. The HeartShare Wellness clinic in downtown Brooklyn, which offers physical, speech, occupational and other therapies, has expanded to several satellite locations throughout HeartShare. "Working in the day hab setting allows our clients to keep their appointments, while also incorporating functional words and phrases into the session. Leena loves getting her nails done, and she knows the process, so I use words like 'nail polish,' 'cotton ball,' and 'remover,'" she explained. "Leena catches on quickly. She's making great progress."





Health Home

Luis relies on a helping hand from Christian Velasco, a Health Home Care Manager. HeartShare's Health Home coordinates health care and resources for children and adults with two or more chronic conditions. "Many of our clients already deal with a lot. We're here to make sure they access the health services they need to stay out of the ER and get better," said Christian, who works with about fifty clients throughout the five boroughs. What is Luis up to when he's feeling well? Visiting the local senior center, watching classic movies and rooting for his home teams.

A woman with dark, wavy hair is standing in front of a brick house. She is wearing a sleeveless top with a blue and black floral pattern and black pants. The house has a white porch with a light-colored gable. There are some bushes in the foreground.

Energy Assistance and Community Development

Christine had difficulty making ends meet when she was diagnosed with cancer two years ago. “I really needed this grant. I had no other option,” she said. As a middle school history teacher in Bay Ridge, Christine was unable to work following the diagnosis. This fall, Christine has been feeling stronger. “I love my students and I want to get back to them,” she said. “Most people don’t realize how crucial the energy grants are. Assistance is not just for a certain type of person. Many of us are one unexpected crisis away from needing a little help,” explained Joe Guarinello, Vice President of Energy Assistance and Community Development.



About HeartShare St. Vincent's Services

HeartShare St. Vincent's Services (HSVS) empowers children, individuals and families to overcome the challenges of family crises, addiction, mental illness and poverty. Working together, HSVS opens new doors of opportunity to help clients achieve healthy and happy lives. With four programmatic divisions - Foster Care and Preventive Programs; Integrated Health Services; Residential and Housing Programs; Youth Development and Community Programs - HSVS staff members serve over 6,800 New Yorkers each year, including the City's most vulnerable youth. This continuum of services enables HSVS to meet clients' unique circumstances and needs, equipping them with the tools and skills necessary to achieve their dreams. By offering a stable home, a safe place to go after school, a means to graduate college and the skills to achieve physical and mental well-being, HSVS equalizes opportunities for those who need it most.

Our Vision

Our commitment to excellent services and supports will enable children, adults and families to reach their fullest potential and lead meaningful lives as active participants in society.

Our Key Commitments

- Making sure that every child we serve is in a safe environment, where they have a loving connection with a caretaker, and access to the social, emotional, and educational support they need to meet their development milestones.
- Empowering and engaging parents through the delivery of a comprehensive set of services and support that help them get their children home as safely and quickly as possible, or keep their children home safely.
- Delivering services to individuals, children and families that have been proven to change lives for the better, and are flexible enough to meet the needs of each individual and his or her unique circumstances.
- Helping youth find and follow their own path to transition into adulthood, become self-sufficient, and achieve their dreams.
- Ensuring staff have the tools and supports they need to achieve the vision of the agency and thrive, both personally and professionally, in an environment that is respectful, inclusive, and enriching.
- Celebrating success in all forms and across all aspects of our agency, and encouraging our staff and the individuals we serve to do so in concert with us.

BOARD OF DIRECTORS

Kenneth P. Nolan, Esq.
Chair

Cody K. McCone, Esq.
Secretary

Jonathan C. Goldstein, Esq.
Treasurer

Members

Robert M. Corwen, Jr.
Craig A. Eaton, Esq.
Rev. Msgr. Robert M. Harris, LCSW-R
Christopher G. Jones, MSW
Laura Lazarus
Thomas J. McManus, Esq.
Sean Ringgold
Mark A. Van Lith

ADMINISTRATION

Executive Director

Dawn V. Saffayah, MPA

Senior Vice President

Jennifer Outlaw, LCSW, CCM, CPC

Vice Presidents

Joan Baim, Esq.
Melissa R. Ferrari, MBA
Shanna Gonzalez, LCSW
Brooke Rosenthal, Esq.
Shawnta Washington, MPA

Senior Directors

Sherry Brumel
Sydney McKinney

COUNSEL

Wingate, Kearney & Cullen
45 Main Street, Suite 1020
Brooklyn, NY 11201

INDEPENDENT AUDITORS

Loeb & Troper
655 Third Avenue
New York, NY 10017

EMPLOYMENT IDENTIFICATION NUMBER

#11 - 1631823

www.hsvsnyc.org



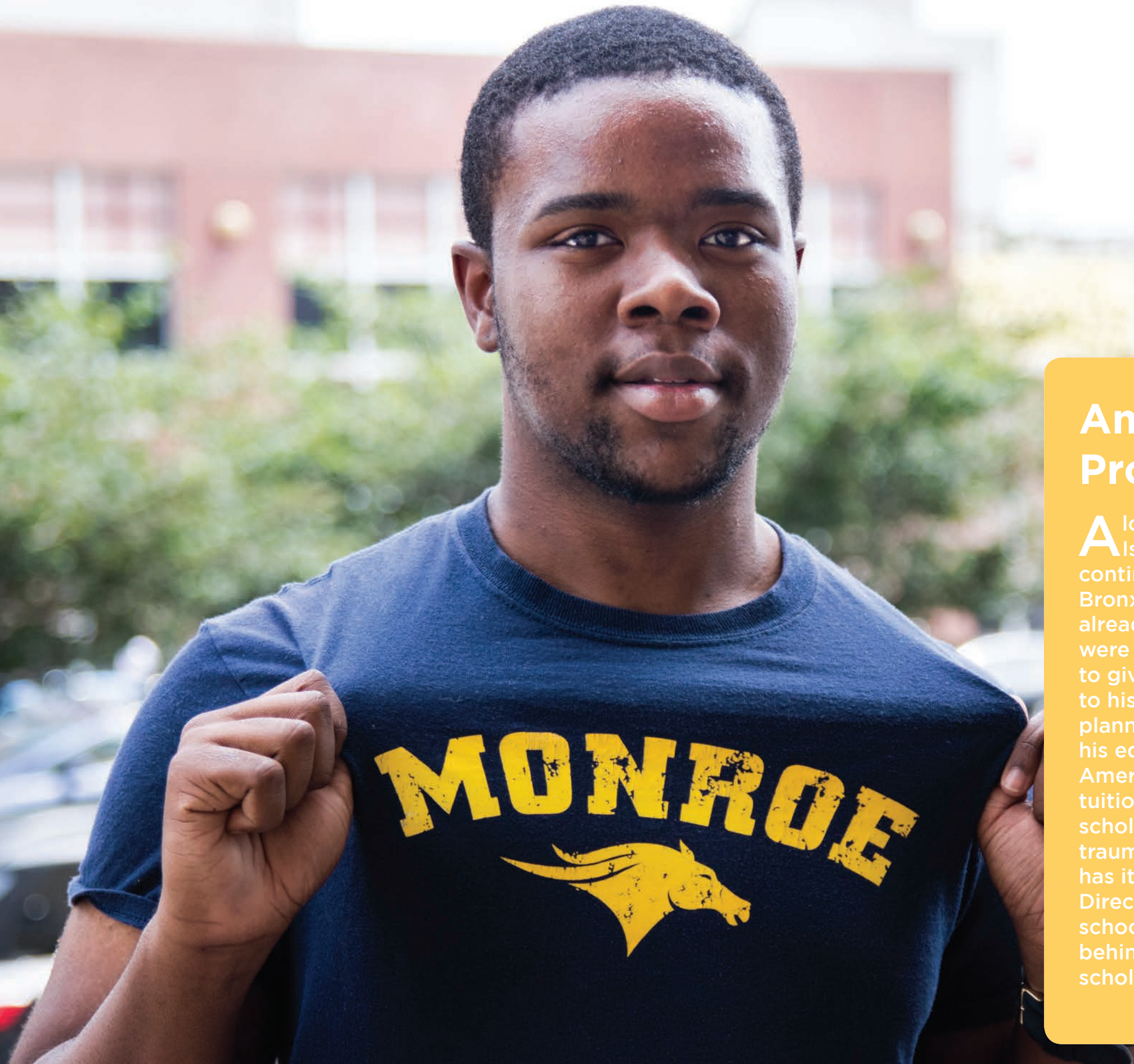
Foster Care & Adoption

Safiya wanted to become a mother. She attended trainings at HSVS. Then, she prepared a nursery and waited. When Safiya first held her baby, Alani opened her eyes and smiled. “And she hasn’t stopped smiling since.” Ultimately, Alani was freed for adoption and permanently became Safiya’s baby girl. Four months later, Safiya was pregnant with twins. “I don’t know what aligned in the universe after Alani came into my home, but now, I have the daughter I always wanted and my beautiful boys. I can’t believe it,” said Safiya with a huge smile. This fall, Alani started pre-school. Safiya has high hopes for her daughter. “Alani’s headed straight to the honors class,” she said, gleaming with maternal pride.

Preventive Services

Camille's family was going through a lot when they first started working with Peggy St. Philippe from HSVS East Brooklyn Family Service Center. In particular, thirteen year old Calista was coping with the loss of her dad, the birth of a new baby sister and the adversities that come with being a teenager. Camille talked about her own struggles growing up and how she mostly raised her daughters on her own. "Now look at us," said Camille looking proudly at her three girls, Calista, Miranda and baby Mattila, cuddled together on the couch. "We're closer and stronger than ever."





American Dream Program

Alonzo was placed in a Staten Island group home, but wanted to continue at his charter school in the Bronx. With a two hour commute and already behind academically, the odds were stacked against him. “I refused to give up,” Alonzo said. He made it to his high school graduation. Alonzo planned to join the military to finance his education, but discovered the American Dream Program, a college tuition scholarship and support. “Our scholars are resilient in the face of trauma. That’s called *grit*. And Alonzo has it,” said Lauren Pettiette, Senior Director of Education. With his high school diploma and the HSVS team behind him, Alonzo is a proud college scholar. “This is a dream come true.”

Supported Housing

Ralph, who grew up in foster care, experienced personal struggles that lead to homelessness. With the supportive team at HeartShare St. Vincent's Services, Ralph has turned over a new leaf. Ralph's apartment is his personal sanctuary filled with his poetry, paintings from a friend and plants from the Union Square Green Market. Ralph earned his GED, and hopes to volunteer as a peer advocate in order to help those who have gone through what he has. Ralph, who now enjoys juicing and long walks through nearby Prospect Park, is healthy and back on his feet.





Community Programs

Mohamed can't wait to play with his friends at P.S. 102 One World After School Program in Bay Ridge. Rewind. Last year, Mohamed was an English language learner, struggling to express himself and thrive in school. "Mohamed was so frustrated because he couldn't verbalize what he wanted to say in English," said his father Emir. With the help of the after-school and summer camp staff at P.S. 102, especially group leader and teacher Robert Terranova, Mohamed's vocabulary quickly expanded. He soon had an easier time in the classroom and with his peers. "The transformation is remarkable," Emir said. "He's learned so much. Thank you."



Chemical Dependency

Daniel knows the difficult road to recovery. Daniel also knows that those who have helped him are in a tough line of work. “Barbara Simmons has a good heart. You can’t pay people to do a job like she does,” he said. Daniel started treatment at the HSVS Chemical Dependency Clinic in downtown Brooklyn, which includes individual and group counseling sessions. “It’s so important to make time for the sessions. It’s not just abstinence. Recovery is talking about how you feel and learning the tools to manage stress,” Daniel explained. Now, Daniel is focused on giving back to those who have supported him unconditionally, including caring for his mom, who is battling cancer.

Our Memberships and Affiliations

GOVERNMENT PARTNERS

HeartShare proudly acknowledges its ongoing partnerships with New York City and State. Their programmatic support and funding enable HeartShare to provide services to those in need.

NEW YORK CITY

Administration for Children's Services
 Department for the Aging
 Department of Education
 Department of Health and Mental Hygiene
 Department of Youth and Community Development
 Housing Authority
 Human Resources Administration
 The Council of the City of New York

NEW YORK STATE

Adult Career and Continuing Education Services-Vocational Rehabilitation
 Child and Adult Care Food Program
 Department of Education
 Department of Health
 Department of Health, AIDS Institute
 Department of Mental Health
 Energy, Research and Development Authority
 New York State Assembly
 New York State Senate
 Office of Children and Family Services
 Office of Mental Health
 Office for People With Developmental Disabilities

MEMBERSHIPS & AFFILIATIONS

Accountable Care Coalition of Greater New York
 American Academy of Cerebral Palsy and Developmental Medicine

American Academy of Developmental Medicine and Dentistry
 American Association of Blacks in Energy
 American Association of Children's Residential Centers
 American Association on Intellectual & Developmental Disabilities
 American Occupational Therapy Association
 American Psychological Association
 Association for Supervision and Curriculum Development
 Better Business Bureau
 Brooklyn Chamber of Commerce
 Brooklyn Developmental Disabilities Council
 Brooklyn Health Home
 Care Design New York
 Coalition of Mainstream Employment Programs
 Columbia University Graduate School of Social Work
 Community Care of Brooklyn PPS
 Community Healthcare Network
 Consortium for Workers Education
 Council for Exceptional Children
 Council of Voluntary Family and Child Caring Agencies
 Council on Accreditation of Services for Families and Children
 Council on Social Work Education
 Developmental Disability Nurses Association
 Direct Support Professionals Alliance of New York State Inc.
 Health Care Compliance Association
 HIV/AIDS Pediatric AIDS Advisory Group

HIV/AIDS Services Administration
 InterAgency Council of Developmental Disabilities Agencies
 InterAgency Transportation Solutions
 NYU Lutheran-Led PPS
 NYU Tandon School of Engineering
 Meaningful NY Initiatives for People with Disabilities, Inc.
 Mt. Sinai/Beth Israel Family Medicine Residency Program
 National Association for the Education of Young Children
 National Association for Female Executives
 National Association of Social Workers
 National Council on Family Relations
 National Fragile X Foundation
 National Fuel Funds Network Consortium
 New York Integrated Network for Persons with Developmental Disabilities
 New York State Association of Community and Residential Agencies
 New York State Association of Day Service Providers
 New York State Public Service Commission
 New York State Speech-Language-Hearing Association
 NYU/Lutheran Family Medicine Residency Program
 Partnership for After-School Education
 Queens Council on Developmental Disabilities
 Society for Human Resource Management
 Special Needs Patient Taskforce at Staten Island University Hospital/NS-LIJ
 Staten Island Developmental Disabilities Council
 The Genie Foundation
 The Training Collaborative for Innovative Leadership



Our Programs

DEVELOPMENTAL DISABILITIES SERVICES

Total People Served: 9,264

RESIDENTIAL SERVICES

HeartShare offered homes and apartments to **373 adults** and **14 children** with I/DD.



- Bay Parkway Residence
- Josephine and Joseph Abatemarco Residence
- Marian and Anthony Attardi Residence
- Avenue L Supportive Apartments
- Bollmann Family Residence
- Kathleen and James Buckley Residence
- Salvatore B. Calabrese Residence
- Canarsie Residence
- Carroll Street Residence
- Joseph and Laura Caruana Residence
- Joseph V. Caruana Residence
- Clinton Residence
- Thomas J. Cuite Residence
- Laura M. Calderhead and Florence A. DeSola Residence
- Community Living Program
- Doonan-Drake Residence
- Elvis Duran Residence
- E. 102nd Street Residence
- Craig and Susan Eaton Residence
- End Place Residence
- Antonetta Ferraro Residence
- Flatbush Residence
- Tamara Tunie and Gregory V. Generet Residence
- Lydia and Napoleon Giannattasio Residence
- Gowanus Residence
- Msgr. Thomas G. Hagerty Residence
- Hart Street Residence
- David Gregory Healy I Residence
- David Gregory Healy II Residence
- Jim Kerr House
- Midwood Residence

- Maureen Moore Residence
- Nancy and Kenneth P. Nolan Residence
- Park Avenue Residence
- Park Slope Residence
- Ralph Avenue Residence
- Rev. Thomas G. Pettei Residence
- Carol and James Scibelli Residence
- Lillian and John Sharkey, Sr. Residence
- Helen and John Sharkey Residence
- Rita P. Short Residence
- Ann and Charles Subbiondo Residence
- Ava and Ralph Subbiondo Residence
- Clare and Frank Torre Residence
- Dr. Catherine White Residence

DAY SERVICES

HeartShare offered learning opportunities with a focus on community inclusion to **683 adults** with I/DD.

- Frances Aiello Day Habilitation Program (718) 443-5071
- Avenue L Day Habilitation Program (718) 338-3746
- Bay Ridge Day Habilitation Program (718) 745-7117
- Brooklyn Day Habilitation Program (718) 797-2020
- Brooklyn Day Hab without Walls (718) 797-2020
- Brooklyn Partnering with Autistic CiTizens (PACT) Day Habilitation Program (718) 797-2020
- Harry Hoffman Day Habilitation Program (718) 899-2752
- Kaleidoscope Day Services Program (718) 797-2020
- Eileen and William Lavin Day Habilitation Program (718) 745-7117
- Queens Day Habilitation Program (718) 281-0480
- Staten Island Partnering with Autistic CiTizens (PACT) Day Habilitation Program (718) 698-2737
- Union Turnpike Day Habilitation Program (718) 969-0419

COMMUNITY HABILITATION SERVICES

HeartShare helped **29 people** with I/DD living at home set and achieve goals. To learn more, please call (718) 422-3278.



PREVOCATIONAL & EMPLOYMENT SERVICES

HeartShare prepared **85 adults** with I/DD for the world of work. To learn more, please call (718) 797-7330.

PRE-SCHOOL SERVICES

HeartShare evaluated and educated **910 children** with I/DD, as well as UPK students.

- Governor Mario M. and Matilda Raffa Cuomo Family First Step Early Childhood Center (718) 441-5333
- HeartShare First Step Early Childhood Center, Patrel and Victor Taranto Campus (718) 238-4637
- Lefferts/Liberty Kiwanis First Step Early Childhood Center (718) 848-0300
- Dolly and Frank Russo, Sr. First Step Early Childhood Center (718) 805-7117

INDIVIDUAL SUPPORT SERVICES

HeartShare guided **453 adults** with I/DD to reach their personal goals.

- Medicaid Service Coordination (718) 422-3336
- Self Directed Services (718) 422-3271

FAMILY SUPPORT SERVICES

HeartShare supported **1,060 individuals** with I/DD and their families.

RESPIRE/RECREATION PROGRAMS

HeartShare offered respite for families caring for **552 children and adults** with I/DD. To learn more, call (718) 422-3257.

OVERNIGHT RESPITE PROGRAM

HeartShare offered extended overnight respite for families caring for **70 children and adults** with I/DD. To learn more about our Serving People with Autism (SPA) Overnight Respite Program, call (347) 983-4305.

EVALUATION PROGRAM

HeartShare facilitated **24** psychosocial and psychological evaluations for **children with I/DD**. To learn more, call (718) 422-3227.

FRAGILE X PROGRAM

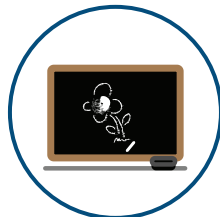
HeartShare provided Fragile X Information and Referrals to **222 people** caring for those with I/DD. To learn more, call (718) 422-3271.

OPTIONS PROGRAM

HeartShare offered financial support improving quality of life for **192 children and adults** with I/DD. To learn more, call (718) 422-3290.

HEARTSHARE EDUCATION CENTER

The HeartShare School educated **72 children and teens** with I/DD, including autism spectrum disorders. To learn more, call (718) 621-1614.



HEARTSHARE WELLNESS

HeartShare Wellness offered health care and health coordination services to **5,585** vulnerable New Yorkers.



ARTICLE 16 CLINIC

offered speech, occupational and physical therapies, individual and group counseling, psychological and psychosocial evaluations, as well as sexuality assessments, to **660 people** with I/DD. To learn more, call (718) 797-2020 x8080.

HEALTH HOME TARGETED CASE MANAGEMENT PROGRAM (TCM)

provides important case management services to **4,925 children and adults** with two or more chronic conditions. To learn more, call (718) 797-7322.

ENERGY ASSISTANCE & COMMUNITY DEVELOPMENT PROGRAMS

HeartShare supported **18,347** low-income New Yorkers through energy grants and responding to the needs of the community.



CARE AND SHARE

(855) 852-2736
Number Served: 5,445
In affiliation with National Grid

NEIGHBORHOOD HEATING FUND

(718) 522-6514
Number Served: 2,992
In affiliation with National Grid

PROJECT SHARE HEATING FUND

(844) 579-5555
Number Served: 7,417
In affiliation with NYS Electric and Gas Corporation (NYSEG) and Rochester Gas & Electric (RG&E)

ENERGYSHARE

(877) 480-7427
Number Served: 2,493
In affiliation with Con Edison

HEARTSHARE ST. VINCENT'S SERVICES

HeartShare St. Vincent's Services (HSVS) empowers **6,869 youth, individuals and families** to overcome seemingly impossible challenges of family crises, addiction, mental illness and poverty.



FOSTER CARE & PREVENTION PROGRAMS

HSVS strengthened **1,300 families** in times of crises. We collaborate with parents and provide the tools and skills necessary to build loving, happy family environments in which children and youth thrive.

FOSTER CARE & ADOPTION

HSVS placed **697 children** in healthier home environments.

- Brooklyn Office (718) 522-3700
- Queens Office (718) 739-5000

PREVENTIVE SERVICES

HSVS offered resources to strengthen **603 families** in crisis.

- Bensonhurst Family Services (718) 234-1717
- East Brooklyn Family Services (347) 770-8155
- Shirley Tanyhill Family Services (718) 372-0580
- Special Medical Prevention Program (718) 422-2447

INTEGRATED HEALTH SERVICES

HSVS provides skills-based therapy and healthcare management to empower **1,691 individuals** to achieve wellness. We guide those in our care to strengthen their family and social relationships, achieve personal goals and contribute more meaningfully to their communities.

MENTAL HEALTH CLINIC

HSVS empowered **1,286 children, youth and adults** to achieve heightened wellbeing. To learn more about our Article 31 Mental Health Clinic, call (718) 522-6011.

CHEMICAL DEPENDENCE

HSVS helped **405 adults** treat addiction. To learn more, call (718) 422-2291.

RESIDENTIAL & HOUSING PROGRAMS

HSVS provides safe homes for **220 children, youth and adults**. Our clients, given the security they sense in a safe, caring and stable living environment, combined with targeted support services, are empowered to overcome the challenges in their lives.

YOUTH RESIDENCES

HSVS provided safe homes to **69 foster youth** in residential care to support stability.

- A. Miller Corwen Residence
- Baldwin J. and Josephine DiGiovanna Residence
- Meiers Corner East Residence
- Richmond Hill Residence

CHILDREN'S COMMUNITY RESIDENCES

HSVS delivered therapeutic support in a group residential setting to help **43 children** manage behavioral difficulties.

- Brownsville Children's Community Residence
- Laurelton Children's Community Residence
- Springfield Gardens Children's Community Residence
- St. Alban's Children's Community Residence

SUPPORTED HOUSING SERVICES

HSVS provided housing to help **108 adults** experiencing health, financial and other difficulties stabilize their lives. To learn more, call (718) 422-2219.

- HIV/AIDS Residential Housing Program
- Forensic Supported Housing Program
- Severe Mental Illness Supported Housing Program
- Young Adult Supported Housing Program

YOUTH DEVELOPMENT & COMMUNITY PROGRAMS

HSVS encourages **3,658 children and youth** in the community and in foster care to develop positive and constructive relationships, expand their experiences and achieve their dreams.

COMMUNITY PROGRAMS

HSVS created an enriched learning community for **3,626 children, youth and adults** through its after-school, evening and summer camp programs.

- McKinley I.S. 259 Beacon Program (718) 836-3620
- P.S. 102 One World After-School Program (718) 567-2365
- P.S. 288 Shirley Tanyhill Beacon Program (718) 714-0103
- Surfside Cornerstone Program (718) 996-5893
- Wyckoff Gardens Cornerstone Program (718) 834-8595

THE AMERICAN DREAM PROGRAM

HSVS supported youth in foster care to achieve their college and career dreams. To invest in our American Dream Program Scholars, call (718) 422-2339.

Our Donors



HeartShare extends its sincerest appreciation

to its generous supporters, and gratefully acknowledges the following contributors who donated \$250 or more between July 1, 2016 and June 30, 2017. Your gracious support assists HeartShare in providing high-quality services to over **34,000** New Yorkers. If we inadvertently omitted your name, please accept our sincerest apologies,

and ask that you contact us at (718) 422-4213.

If you would like to contribute, please use the enclosed envelope, visit www.heartshare.org or mail your contribution to:

HeartShare Human Services of New York
 Attn: Public Affairs Office
 12 MetroTech Center, 29th Floor
 Brooklyn, NY 11201

#	AI & Peggy DeMatteis Family Foundation	Thomas G. Ashmore	Beacon Therapy Services, PLLC	Anthony F. and Marie Bianca	Door Corp.
147 Remsen Street Associates LLC		AST Fund Solutions, LLC			Bruce Supply Corp.
7X24 Exchange Inc.	Alpha Kappa Alpha Sor., Inc.	B	Bedford Funding Corp./Martin G. Murray	Birth Inc.	Bryan Butwick
A	Evelyn A. Alvarez and Terry Richards	Eunice Beck	The Honorable and Mrs. Ariel E. Belen	Bivona & Company, LLC	BTIG, LLC
Paulette and Michael J. Abatemarco	John J. Amore	Arleen Baez	Mr. and Mrs. Joseph R. Benfante	Joseph Bivona	James G. and Margaret Buckley
Leslie Abbey	Anchors Aweigh Associates LLC	Lourdes Bailey	Mary Bennett	Elizabeth B. Black	Kathleen Buckley
Kenneth Abruzzi	Renee Anderson	Joan Baim, Esq.	Bensonhurst Bay Ridge Kiwanis Foundation, Inc.	Blue Ribbon Fish Company, Inc.	Bull Productions, Ltd./Rosanna Scotta and Louis Ruggiero
Gary L. Ackerman	Angels on the Bay, Inc.	Bernard J. Baldinger		Bonide Foundation Inc.	John J. Burke
Adelphi Academy of Brooklyn	Pearl Anish	Michael Bane	Bensonhurst Construction Corp.	John M. Boyle	C
Estate of Monsignor Domenick J. Adessa	Apollo/Raland Brokerage	Mitchell Banchik	Bensonhurst Lions Club	Bryan L. Bradley	Vanessa Cabrejos
Thomas Aellis	Marika S. Apostolakis	Bartel Construction Corp.	Gennaro Berardelli	Jill Bragg	Douglas P. Caffarone
Afederal Exterminating LTD	Approved Oil Company	Richard Barnard	Gerry Berardelli	Diane Brand	Joseph Calabrese
James Agoglia/RAM Abstract, Ltd.	Marina Arnold	Noreen A. Barnes	Phyllis J. Berman	Briscoe Protective Systems, Inc.	Mr. and Mrs. Salvatore B. Calabrese
Ilan Aharoni	Arthur Webb Group, Ltd.	Dominick Barone	BGBY Investments, LLC/Mark C. Healy	Brooklyn Board of Business Agents	Dr. and Mrs. Robert Calciano
Bryon J. Ahlemeyer		Bay Ridge Federal Credit Union	Mousumi Bhakta	Brooklyn Cyclones	
		Bayside Fuel Oil Depot Corporation		Brooklyn Window &	

Cambium Partners LLC	Stephen P. Cecere and Kathleen L. Johnstone	Estate of Bertha M. Craig
James Capalino	Michael Cervini	Lorenzo Cricchio
John J. Capela	Vincent Cervone	James L. Crimmins
Stanley and Karen Capela	Geraldine Chapey	AnnMarie Crowell
Mr. and Mrs. Carl Campagna	Brian Charles	Rocco Crupi
Jeffrey Campbell	Chipotle Mexican Grill	Barbara N. Cuthel
Michael Capello	Aaron Choo	Michael A. and Antoinetta Cutrona
Gerard S. Capers	Church Mutual Insurance Company Foundation	D
Edward F. Card	Peter Ciaccia	Jess Dannhauser
Chris Carey	Nancy C. Cianflone	Adam D'Auguste
Maria Carlucci	Cicatelli Associates, Inc.	Sal D'Egidio
Thomas J. Carroll	George A. Cincotta, Jr.	Mr. and Mrs. Angelo J. Del Giudice
William G. Carroll	Ryan Clarke	Frank Del Giudice
Dr. and Mrs. Joseph A. Caruana	Anthony Clemenza, Sr.	John DeLosa
Mr. and Mrs. Thomas Caruana	William J. Clinton	Lucille DeLorenzo
Carone & Associates PLLC	Codispoti & Associates, P.C.	Anthony DeMonaco
CARR, A Xerox Company	E. Jeanette Collins	Design 2174, Ltd.
Enitza Carril	Colony Pest Management, Inc.	Deno's Wonder Wheel Park
Donna M. Carroll	John A. Colonna	Dr. and Mrs. John J. DiGregorio
Case Cash Funding, LLC	Columbiettes, Samuel Cardinal Stritch Council #4661	Mr. and Mrs. Eric DiNapoli
Francis P. Casey	Commerical Building Maintenance Corp.	Mr. and Mrs. Richard DiNapoli
William R. Casey	Committee to Re-Elect George Onorato	Enrico DiNardo
Mr. and Mrs. Thomas J. Cassara	Complete Medical Products	Mamadou Dione
Robert J. Cassiliano	Gerard Conlon	Direct Freight Express
Catholic Cemeteries, Diocese of Brooklyn	James F. Connolly	Nicholas T. Domingues
Alfred Cavallaro, Esq.	Conte Carpets and Flooring	Donna and James O'Meara Charitable Foundation
Daniel Cavanagh	Veronica Corbett	Dennis and Megan Donnelly
Paul Cellupica	Hayley Cowitt	Brian E. and Audrey Donohue
Celtic General Contractors, Inc.	Maurice Cozzo	Andrew T. Drake
Marjorie Centrone		Driscoll Foods/George J. Pandel
Century 21 Homefront		

E

Mr. and Mrs. Craig A. Eaton
Eaton & Torrenzano LLP
Mary Eaton
Mr. and Mrs. Russell R. Eberhardt
EEG, Inc.
Brian Elgart
Glenda Elie
William F. Elliott
Elizabeth Elston
Paul Elston
Barry Emen
Karen Erhard
Raymond Eschwie
Suni Escobar
Ronald S. Esposito
Everest Reinsurance Company, Ltd.
Evers Pharmacy
Express Group, LLC

F

Barbara Falcone
Anthony J. Famighetti
FCL Charitable Foundation Trust
Rebecca Fabian
Robert E. Falk
Thomas Fascianella
FDNY Captain Timothy Stackpole Foundation
Victor Feld
Barbara Feldon
Lynette Fernandez
Lillian T. Fiore
The Reverend Patrick S. Flanagan, CM

Marianne Fletcher
Ellen Floyd
Norma Forde
Demetrios Frangiskatos
Ed Fried
Friends of Marty Golden
Luis Fujimoto

G

Laura Gaines
Mary Galante
Galway Properties, LLC
Gargiulo's Restaurant
Gargiulo's Restaurant Staff
Genesis Masonic Lodge #1
George L. Clark, Inc. Realtors
Anthony Gerasi
Cheryl A. Geremia and Richard A. Schulsohn
Mr. and Mrs. Frank Geremia
Mr. and Mrs. Frank V. Geremia, Sr.
Mr. and Mrs. John M. Geremia
Geremia Financial Services, LLC
Kathleen Gennaoui
Mr. and Mrs. Edward N. Giannattasio
Joseph M. Giardina
John J. Gilhooly
Cristina Givelechian
Global Communications Services, Inc.
Jennifer Glover-Outlaw
Robert C. Golden and Maureen Moore

Jonathan C. Goldstein, Esq.
Jose A. Gonzalez
Shanna Gonzalez
Sarah Graizbord
Adrienne Grant
Graybeards Ltd.
Kathleen Grosvenor
Guardian Life Insurance Company
William R. and Donna Guarinello
Guggenheim Partners, LLC
Efrain N. Guzman

H

Mr. and Mrs. William A. Halvorsen
Harbor Fitness Gyms
Courtney Hardart
Jean-Marc Harfouche
Marilyn A. Harris
The Reverend Monsignor Robert M. Harris
Abigail Hawk and Bryan Spies
Mr. and Mrs. Mark C. Healy
Heating & Burner Supply, Inc.
Helen Matchett DeMario Foundation
Brian Hennessy
Erin Hennessy
Dr. Farah Herbert
Thurman Hickson
Michael F. Higgins
Calvin Klein Hoffman
Janine and David E. Halldorson
Home Abstract Corp./Mark and Gregory D'Addona



Patricia A. Hoza	Joseph P. Clavin Sons, Inc.	Mr. and Mrs. William K. Lavin	Marine Park Funeral Home Inc.	Mr. and Mrs. Terence K. Mullin	Katelyn M. O’Grady	Prospect Drugs Company, Inc.	Charles Russo	Javier R. Seymore	Catherine Symbouras	Tommy’s Auto Repairs, Inc.	Katie and Charles Wagner
HSBC Bank USA, N.A.	K	Mr. and Mrs. Henry Lessler	Marsh & McLennan Agency, LLC	Joseph Mure, Esq.	Kathleen O’Hara	Prudential Foundation Inc.	Mr. and Mrs. Giacomo (Nino) Russo	Mr. and Mrs. John T. Sharkey	T	Clare T. Torre	Shawnta Washington
Marie Gail Huber	Kamco Supply Company	Joyce F. Levin and Gary Perl	Mr. and Mrs. Bruce H. Mattson	Joseph P. Murin	Ana Oliveira	James L. Purcell	Louis Russo	Sophia L. Shaw	Rita M. Tan	Jillian Torre	Sekou Waters
Rose Mary Hughes	William R. Kahn	Erin Levine	Danielle Maurice	Mr. and Mrs. Martin G. Murray	Mr. and Mrs. Brian O’Reilly	John H. Purcell	Nicholas J. Russo	Neil Sherry	Anne C. and Joseph V. Taranto	Mr. and Mrs. Paul J. Torre	WCA Technologies, Inc.
William T. Hunter	Stephanie Karlis	Bruce Levy	Dione Mayer	Sheila and John Murray	James D. Orlando	Joy M. Purcell	S	Brian S. Shlissel	Tastee Bait & Tackle	Alexander Trantino	Weichert, Realtors - The Franzese Group
Iannelli Construction Co. Inc./Vincent Iannelli	Mr. and Mrs. Gerard J. Kassar	Jeffrey E. Levy	MBS Graphics Inc.	MYLAW Realty Corporation/Robert M. Corwen, Jr.	Orlow, Orlow & Orlow, PC	Q	Adine Sacks	Christine Shon	Technical Elevator Inc.	Rosemarie Tranty	Richard Weiner
Joseph M. Iavarone	Michael Keane	Liberty Mechanical Contractors Inc.	Eileen J. McCabe	Our Lady of Angels Church	Our Lady of Angels Church	Queens Boulevard Extended Care Facility	Dawn V. and Gabe Saffayeh	Tony Sirico	Telco Experts LLC	Michael Troisi	Michael Wells
IL Mare Pizzeria Corp.	Mr. and Mrs. Frank J. Keating	Sandra Lichtenstein	Shinece McClymont	Santino Montalbano	P	R	Mr. and Mrs. George Saffayeh	Peter Skavla	Stephen Tellone	Mr. Turocchia	Karen Westermeier
Rita Imperato	Kennedy’s Restaurant	Lifetouch National School Studies	Mr. and Mrs. Cody K. McCone	Thomas J. Nader	P.R. Plumbing & Heating, Inc.	R.J. Bruno International, Inc.	Mr. and Mrs. Robert Saffayeh	Joshua Skolnick	Barbara A. Slattery	Sam Turvey	Dawn White
Paige A. Ingalls	Jim Kerr	Mr. and Mrs. Robert Lindsay	Arnold J. McCormick	Thomas J. Nader	Vincent L. and Gina Pagnotta	Linda Rasport	Mr. and Mrs. Robert Saffayeh	Jermaine Sean Smith	Linda M. Tempel and The Honorable Alex Calabrese	Two Trees Management Co. LLC	John Whittall
Inner City Electrical Contractors, Inc,	Brian Kerrane	Maria Ljubich	Kenneth J. McGlynn	National Grid - Community Investment	Scott Palma	Craig A. Ratigan and Laurie Donnelly	RE/MAX Metro	Patricia Smyth	Laura Tesoro	U	William M. Casey Foundation, Inc.
Robert J. Intelisano	Avi Khuller	Loeb & Troper, LLP	Thomas J. McManus, Esq.	Brian Nelsen	Joy D. Palmer	Michael J. Reap	Josephine and Richard Savastano	Michael Sorrentno	The Aellis Family	United HealthCare Services, Inc.	Rhonda Williams
Investors Bank	Michelle Kindya	Daniel Lofrez	McQuilling Partners, Inc.	New York Design Center Inc.	Cecilia Pan	Redlich Horwitz Foundation	Janice Saunders-Ashton	St. Edmund Preparatory High School	The Bravest Football Club Inc II	V	Wingate Kearney & Cullen, LLP
Investors Foundation, Inc.	Kings Plaza Plumbing & Heating, Inc.	Brian P. Long	Dalia Mechanic	New York Life Insurance Co.	Andrew E. Pappert	Shannon M. Reilly	Stephen G. Savegh	St. Finbar Roman Catholic Church	The Delorio Law Group PLLC	Alberto Valentin	WISH of Rockaway, Inc.
Ira W. De Camp Foundation	Kiwanis Club of Glendale NY, Inc.	Long & DeLosa Construction Group, Ltd.	Jeff Mechanic	New York Marriott Marquis	Phil Panarelli	Maureen A. Relland, MD	Kevin Scanlon	St. Francis College	The Fitch Group	Valentino Interiors Inc.	Richard P. Wismer
Iron Mountain	Kiwanis Club of Lefferts Liberty	The Honorable and Mrs. Michael R. Long	Megamax Voice & Data, Inc.	New York Safety Program, Inc.	Mr. and Mrs. George J. Pandel	Grace Schaeffer	Stephen M. Schewel	St. John’s University	The Frederick Foundation	Vassalotti Associates Architects, LLP	Wolf Properties Management LLC
Irving Pharmacy Corp.	Kiwanis Club of Ozone Park NY Foundation	Concetta Longabardi	Thomas J. Mellett	New York State Association Of Community Residential Agencies	John B. Pannone	Lisa Scher	Stephen M. Schewel	Stanley’s Furniture & Radiator Covers	The Ghetto Kids Inc.	J.E. Vassalotti	Doris S. Wong
Irving T. Bush Foundation, Inc.	Kiwanis NY District Governor	LPS Futures LLC	Mercer	New York State Court Officers Association/Dennis W. Quirk	Thomas J. Patchett	Dan Repetti	Stephen M. Schewel	Starz Power Productions, LLC	The Home Depot, Inc.	Jerry Vecchio	X
Yvonne M. Ivanov	KJA Holdings LLC	William K. Ludolph	Maria Merollo	New York State Court Officers Association/Dennis W. Quirk	Thomas G. Pettei	Jennifer Reres	Estate of Madeline T. Scott	Barbara Stein	The Martin-Lehrer Foundation	Edgardo Velez	Xaverian High School
J Hassan Consulting LLC	Klear View Appliance	Robert and Tara Luhrs	Metro Web Corp	New York State Court Officers Association/Dennis W. Quirk	Thomas G. Pettei	Mr. and Mrs. Vincent Ricciardi	Jessica Schiffman	Jane Steinberg	The New York Community Trust	Carol A. Verdi	Y
William Jackson	Knickerbocker Triangle Association	Helen Mahon	L. Charles Meythaler	Elizabeth Nolan	Lauren L. Pettiette	James J. Riches	Security Technology Bureau, LLC	Steve Belsito Sons, Inc.	The Pinkerton Foundation	Mr. and Mrs. Kenneth Vitale	Y2K Credit Solutions
James J. Buckley Restaurant Corp.	Knights of Columbus Columbus Council #126	Mr. and Mrs. Frank J. Maresca	Lourdes Michel	Elizabeth Nolan	Lauren L. Pettiette	Ridge Abstract Corporation	SEFA – State Employees Federated Appeal	Richard Storm	The Sidney, Milton & Leoma Simon Foundation	Mr. and Mrs. Salvatore Vittoria	IN KIND DONATIONS
Marie Paul Jeanty	Rohan Kohli	Jennifer Maas, Esq.	Adrienne Milea	Mr. and Mrs. Kenneth P. Nolan	Erik Philippides	Ridgewood Savings Bank	Marie Irvine Semexant	Christine E. and John T. Strehle	The Stanley Living Trust	Thomas Vittoria	W
Karen C. Johnson	Martha J. Kuszek	Marco Polo Ristorante	Robert B. Milea	Richard Nolan	Mr. and Mrs. Andrew T. Piekarski	Sean Ringgold	Semper Capital Management	Mr. and Mrs. Robert A. Strehle	The Weinstein Group, P.C.	Patrick J. Waide, Jr.	A
Johnny Johnston	L	Madison Planning Group, Inc.	Mill Basin/Bergen Beach Lions Club	Charles Norton	Pinczewski & Shpelfogel, PC	Marc Roche	Serenbetz Family Foundation, Inc.	Michael Strehle	The Whitmore Group, Ltd.	Wall Street Mortgage	AF Bennett Salon
JoMart Chocolates	Lafata-Corallo Plumbing & Heating, Inc.	Mallilo & Grossman	Minor League Baseball	North River Parking	Peter E. Pisapia, Esq.	Joanne Rodriguez-Greene	Paul Serenbetz	Donna and Frank Stryczek	James Walsh	James Walsh	Amateur Radio Emergency Service (ARES)/Queens
Christopher G. Jones and Stephanie Louer	Lamb Financial Group	Theresa and Jaques Malot	Paul Monahan	NYC Gives (Municipal Employees)	Caroline S. Pittet	Brooke and Ben Rosenthal	Robert C. Serenbetz	Brian Sullivan	Jeffrey Walsh	Julie Walsh	American Golf Corporation
Mr. and Mrs. J. Peter Clavin	Joshua Lamberg	Manhattan Beer Distributors	Jonathan Mondillo	NYSADSP	Roger F. Podesta	Robert Rossi	Thelma Serenbetz	Ava Subbiondo	Charles Thurman	Mary T. Walsh	Archbishop Molloy High School
			Nancy and Daniel B. Mullahy	NYU Office of Community Engagement	Prestige Fund Raising Inc.	Rotary Club of Verrazano	Warren Serenbetz	Subin Associates, LLP	Patrick J. Tiernan	Walter & Olivia Keibach Foundation	
			Danielle A. Mullahy	O	Joseph Profaci	Anthony Russo	Servpro of Northwest Brooklyn	Mr. and Mrs. Daniel B. Sullivan	Tom & Arties Auto Service	Casey K. Wagner	
				Patricia S. O’Connell							

B

Bay Ridge Federal Credit Union
 Bay Ridge Manor
 Bedford Funding Corp.
 Kristen Bell
 Biscuits & Bath
 Brady & Marshak, LLP
 Breezy Point CoOp
 Brooklyn Cyclones
 Buckley's Restaurant
 Kathleen Buckley
 Stanley Capela
 Carlson Audio Visual
 Catholic Cemeteries, Diocese of Brooklyn
 Catholic Cemetery Guild
 CB Richard Ellis, Inc.
 Charity Fund Raising
 Charity Grow
 Melody Chin
 Citadel Security Agency
 Andrew Cole
 Colonia Country Club
 Minerva Confessor
 Kevin Conlon
 Dick's Sporting Goods
 DJ Drew Palmer
 DJ Suds/Brian Sutherland
 Brian E. Donohue
 Elvis Duran
 Dyker Beach Golf Course
 Daniel Edwards
 John Edwards

F

FDNY Captain Timothy Stackpole Foundation
 Ft. Hamilton Army Base
 Gargiulo's Restaurant
 Joseph M. Giardina
 Michael T. Goldstein, MD
 Joseph B. Guarinello
 William R. Guarinello
 The Reverend Monsignor Robert M. Harris
 HBO Entertainment
 Heidell, Pittoni, Murphy & Bach
 Home Abstract Corp.
 Wei-An Huang
 James J. Buckley
 James J. Buckley Restaurant Corp.
 JetBlue Airways
 JoMart Chocolates
 Joseph P. Clavin Sons, Inc.
 Kennedy's Restaurant
 Kenneth Chen Photography
 Kings Auto Group
 Knights of Columbus Joseph B. Cavallaro Council
 Knights of Columbus New York State Council
 Kramer Portraits, New York
 LA Fitness
 Robert Lafemina
 Lexus of Brooklyn

G

H

J

K

L

Joyce F. Levin

Manhattan Toy Company
 The Maniscalco Family/Heartfelt Foundation
 Marco Polo Ristorante
 Marine Park Golf Course
 Joan Martisen
 Lawrence Mathieu
 Danielle Maurice
 Rocco Mercelli
 Miraglia Funeral Chapels, Inc.
 Danielle A. Mullahy
 Nancy and Daniel B. Mullahy
 Terence K. Mullin
 Sheila Murray
 National Grid - Field Operations
 Allen Newman
 New York Marriott Marquis
 Noodle Pudding
 Oheka Castle
 Orangetheory Fitness Brooklyn Heights
 Orangetheory Fitness Park Slope
 Orangetheory Fitness Williamsburg
 Casey O'Reilly
 P.S. 204 Vince Lombardi Elementary School
 Polsky Sports and Entertainment
 Debra L. Poulter
 Provence En Boite French Restaurant
 Louise Puccarelli

M

N

O

P

R

RAM Abstract, Ltd.
 Rockaway Point Volunteer Fire Department/EMT
 Mark Russell
 Sacred Hearts of Jesus and Mary and Saint Stephen's Parish
 Robert C. Saffayeh
 John Sawinski
 Javier R. Seymore
 Shamrock AC
 Peter Skavla
 St. Bernadette R.C. Church
 St. Ephrem R.C. Church
 St. Francis College
 St. Jerome R.C. Church
 Dorothy and Tom Stagg
 Starbucks - Bay Ridge
 Tracey and David Shankman
 Staten Island Skating Pavilion
 Teachers Retirement System of the City of New York
 Linda M. Tempel
 Union Beer Distributors
 Uno Pizzeria and Grill
 USS Intrepid Former Crew Members Association - NY Chapter
 Charles Wagner
 Walt Disney World Co.
 Ralph and Sharon Yazzo

S

Y

Published by

HeartShare Human Services of New York
 Jennifer Reres
Vice President of Communications
 Andrew Moeller
Graphic Design Coordinator
 Molly Hauer
Digital Media Associate
 November 2017

Our Financials

HeartShare's Financial Report Year ending June 30, 2017

Services for the Developmentally Disabled

	REVENUE *	EXPENSES *
Residential Programs	\$54,648	\$45,805
Day Programs	\$23,170	\$21,361
Early Childhood Services	\$14,564	\$13,185
Family Support	\$1,215	\$1,028

Affiliated Programs

HeartShare Saint Vincent's-Grand Total	\$37,790	\$39,189
-Adoption, Foster Care, and Independent Living	\$15,255	\$15,604
-Family Centers & Youth Programs	\$5,801	\$5,567
-Housing Programs	\$11,791	\$10,955
-Integrated Health (Medicaid, OPC, CD)	\$4,943	\$6,338
-Other Programs		\$725

The HeartShare School	\$3,853	\$3,415
HeartShare Wellness Ltd.	\$2,326	\$1,887
Health Home	\$3,032	\$2,087
Energy Programs	\$198	\$146

Total Program	\$140,796	\$128,103
----------------------	------------------	------------------

Management and General Fundraising		\$14,333
		\$615
Total Supporting Services		\$14,948

Public Support and Other Revenue

Contributions	\$2,339	
Net Special Event Income	\$422	
Grant Income	\$1,078	

Total Public Support and Other Revenue	\$3,839	
---	----------------	--

TOTAL	\$144,635	\$143,051
--------------	------------------	------------------

Beginning Net Assets 7/1/2016	\$16,095	
--------------------------------------	-----------------	--

Ending Net Assets 6/30/2017	\$17,679	
------------------------------------	-----------------	--

(*dollars in Thousands)
 Copies of HeartShare's audited financial statements are available upon written request to HeartShare Human Services, 12 MetroTech Center, 29th Floor, Brooklyn, NY 11201.



2017 Annual Report

